

LASERCLAST 35

FOCUS ON THE ESSENTIAL



MORE THAN

11

MILLION

STONE

FREE

PATIENTS

SINCE 1991

EMS+

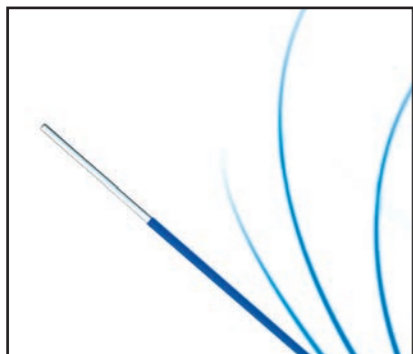
FOCUS ON THE ESSENTIAL

35W
HOLMIUM-YAG
LASER

STATE-OF-THE-ART 35W HOLMIUM-YAG TECHNOLOGY

- ▶ Up to 5J to fragment even the hardest stones.
- ▶ Up to 30Hz to speed up the treatment.
- ▶ Short and long pulse to allow the best possible lithotripsy mode.

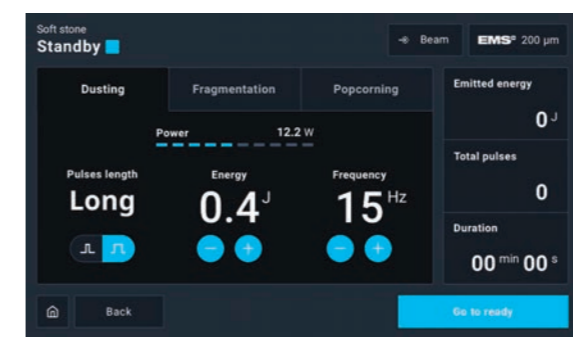
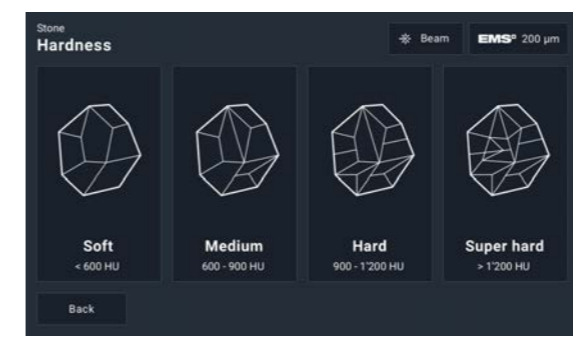
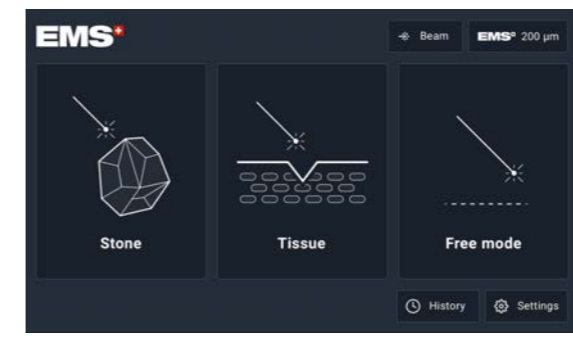
EMS SMARTFIBERS



- ▶ Optimal dusting and fragmentation through small fibers.
- ▶ Automatic recognition to ensure correct maximum power, avoiding damage to device or fiber.
- ▶ Available in disposable and reusable versions. 200, 272, 365 and 550 μm fibers available.



INTERFACE MADE SIMPLE



- ▶ Intuitive, clear and simple.
- ▶ Switch between different modes to optimise your treatment settings.
Lithotripsy modes:
Dusting, Fragmentation, Popcorning.
Tissue modes:
Ablation, Coagulation.
- ▶ Stone hardness presets defined in collaboration with a leading expert on laser lithotripsy, delivering the optimal starting energy and frequency to start the procedure.

MULTI-FUNCTION PEDAL

- ▶ Triple action pedal giving the operator control of the procedure.
- ▶ Switch from standby to ready and change lithotripsy mode directly from the pedal. No external help required.



THE EMS ALL-IN-ONE TOWER

► Designed to be combined:
LaserClast35 with Swiss LithoClast® Trilogy offer the best of flexible and rigid lithotripsy in a compact format for all your stone needs.

- Same visual identity.
- Footrests for more stability.
- Cable and accessories management for both consoles.



REFERENCES

LASERCLAST® 35 CONTROL UNIT

- 1x Foot Pedal
- 2x Set of safety goggles
- 1x Fiber stripper (0.3mm – 1mm)
- 1x Fiber stripper (0.1mm – 0.4mm)
- 1x Fiber cutter
- 1x Interlock connector
- 2x Blast shield
- 1x Filling and draining kit
- 4x Fluid bag hook
- 1x Power supply cable (acc. to country specifications)

FT-246#

EK-1007

DZ-020

DT-469

DT-470

DT-471

DT-472

EP-081

DT-473

DT-1011

10x REUSABLE SMARTFIBERS (SET OF 5x FIBERS)

- SmartFiber 200 µm FR-178#
- SmartFiber 272 µm FR-186#
- SmartFiber 365 µm FR-180#
- SmartFiber 550 µm FR-182#

SINGLE-USE SMARTFIBERS (SET OF 5x FIBERS)

- SmartFiber 200 µm FR-177#
- SmartFiber 272 µm FR-185#
- SmartFiber 365 µm FR-179#
- SmartFiber 550 µm FR-181#

 @EMSUrology

WWW.EMS-UROLOGY.COM

E.M.S. ELECTRO MEDICAL SYSTEMS SA
Chemin de la Vuarpillière 31
CH-1260 Nyon

Tel +41 22 99 44 700
Fax +41 22 99 44 701
Email welcome@ems-ch.com